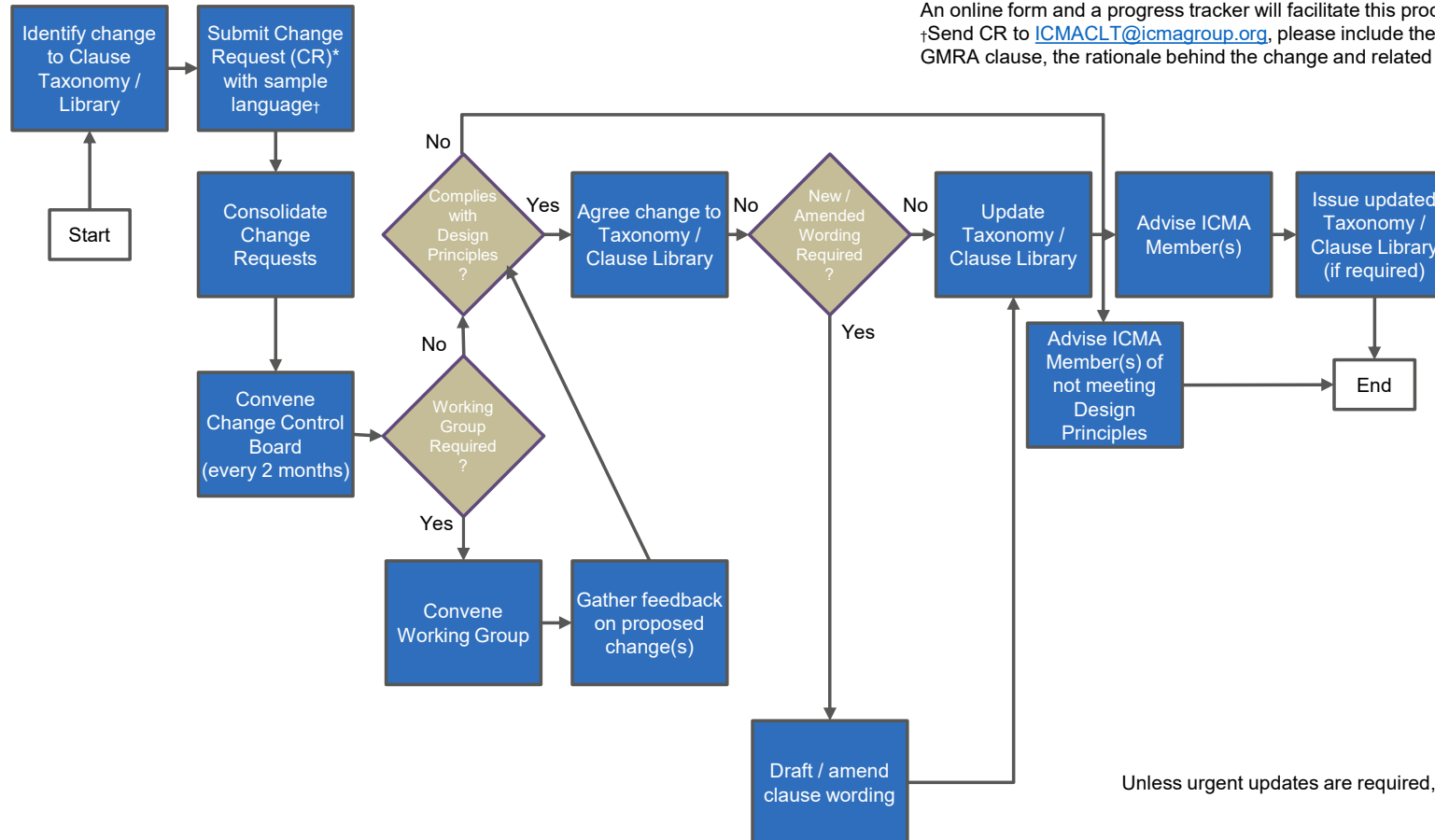


# ICMA CLAUSE LIBRARY AND TAXONOMY CHANGE CONTROL PROCESS

ICMA Member



\*Types of change include a) new clause, b) modify existing clause, c) deletion of clause variant, d) reassignment of a variant to a different clause.

An online form and a progress tracker will facilitate this process.

†Send CR to [ICMACLT@icmagroup.org](mailto:ICMACLT@icmagroup.org), please include the following information; the relevant GMRA clause, the rationale behind the change and related sample language.

Unless urgent updates are required, any updates will be released semi-annually